

# EC Grant Agreement n. JLS/2006/Return/028



## He.Re.

Thematic workshop and Final Conference  
Ragusa, 10-11-12 June 2009

He.Re. : “Health and Return of illegal residents: best practice for basic requirements in the provision of health care to returnees (voluntary and forced), with a particular focus on vulnerable groups prior to departure.

## **DRAFT GOOD PRACTICE REPORT**



Azienda ULSS 20 Verona  
Via Salvo d'Acquisto 7 - 37122 Verona  
Tel: (+39) 045 807 6044 | Fax: (+39) 045 807 6040  
<http://internazionali.ulss20.verona.it>

# TITLE:

**Basic requirements  
in the provision of healthcare to  
returnees  
(voluntary and forced)  
with a particular focus on vulnerable  
groups**

**Report with Recommendations for  
Good Practice**

**1st DRAFT (9 June 2009)**

# M E T H O D O L O G Y :

- Literature review
- Legislative review
- Mapping exercise (ad hoc questionnaires sent to relevant organisations)
- Workshop discussions in the final project workshop in Ragusa, Sicily, (June 2009)



# STRUCTURE OF THE REPORT

- Definitions and scope
- International and European Standards
- Policy and Procedures at national level for the provision of healthcare to returnees
- Policy and Procedures at third country level for the provision of healthcare to returnees
- Conclusions and Recommendations for Good Practice in the provision of healthcare to returnees with a particular focus on vulnerable groups

# RECOMMENDATIONS

- Key concepts
- Policy and Practice
- Training and Information
- Cooperation, Networking and Funding



# KEY CONCEPTS

## HEALTHCARE

- A basic human right
- No discrimination on the basis of administrative status

## VULNERABLE GROUPS

- Vulnerability assessed against economic/social/cultural factors as well as in the context of the Return process

## STAKEHOLDERS

- Involvement of all actors
- Involvement of representatives of third countries essential
- Extensive consultation process required



# P O L I C Y   A N D   P R A C T I C E

Common Protocols for the Provision of Healthcare to returnees, including for example:

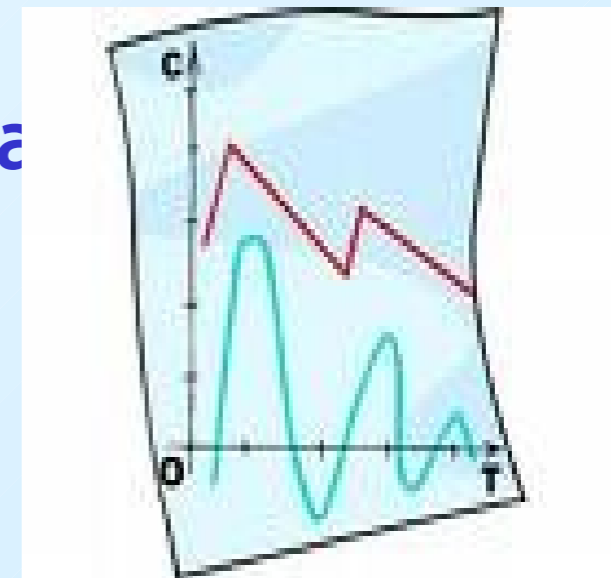
- Compulsory medical check-ups (physical and mental)
- Background Checks (means of arrival in host country, length and conditions of stay, status, etc)
- Medical card
- Medical Treatment (short and long term – e.g for TB)
- Information Packs
- .....

# TRAINING AND INFORMATION

➤ Capacity Building

➤ Information

➤ Statistics and data





# CAPACITY BUILDING

- Information, training and motivation for all actors involved in managing the return process
  - Specific training on needs of vulnerable persons
  - Specific training on legislative developments



# INFORMATION



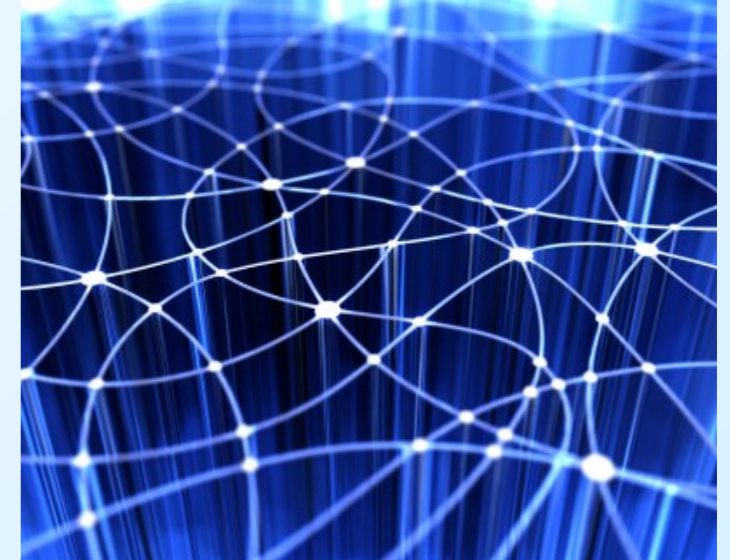
- Easily understandable, accessible by all and appropriate to meet the different needs of vulnerable groups
  - Positive, encouraging helpful and financially affordable
    - Examples:
      - Availability of translated medical records
      - “Medical Passport” in case of specific healthcare needs during transport which require the administration of certain medicines
- Contact details of suitable structures in countries of origin in order to follow up on any specific health care needs

# STATISTICS and DATA



- Keep records in a systematic way at EU level:
  - Case histories of returnees (means of arrival in host country, length of stay, conditions of stay etc... )
    - Most frequent pathologies

# COOPERATION AND FUNDING



## ➤ Networking

- o Constant, permanent and regular collaboration and partnership among all stakeholders
- o Stable international network for an effective exchange of experience and knowledge

## ➤ Funding

- o Dedicated institutions for research, expert advice, advocacy and information dissemination
- o Funding requests contingent on changes being made from a policy and practice standpoint



**Thank you for your attention**



Azienda ULSS 20 Verona  
Via Salvo d'Acquisto 7 - 37122 Verona  
Tel: (+39) 045 807 6044 | Fax: (+39) 045 807 6040  
<http://internazionali.ulss20.verona.it>